

A Word About Asbestos Disposal:

If you suspect your demolition material may contain asbestos, please see WorkSafe BC: <https://www.worksafebc.com/en/health-safety/hazards-exposures/asbestos/think-asbestos>

For health and safety reasons, this material needs to be hauled directly to the Meziadin Landfill.

If you have asbestos to dispose of Contact the Regional District at:

1-800-663-3208 toll free
250-615-6100, or
solidwasteservices@rdks.bc.ca

Construction of the Stewart Transfer Station is complete, and operations are formally transitioning over to the Regional District on October 1, 2019.

The Facility Operations Contract has been awarded to Soucie Construction Ltd.

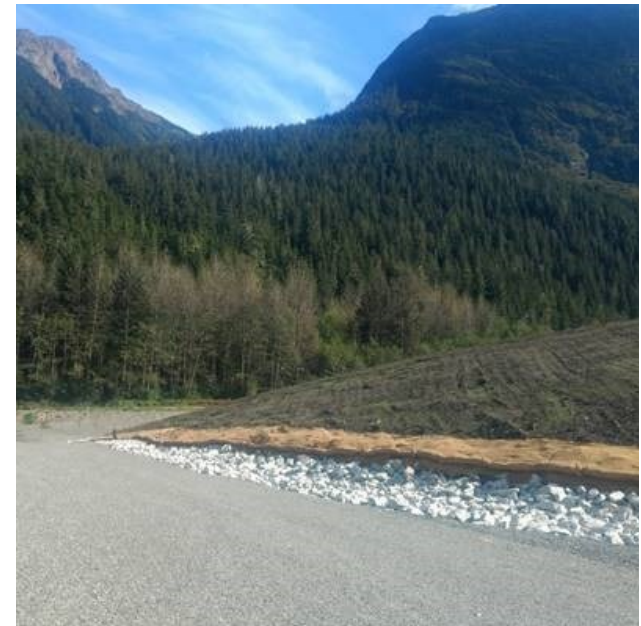
The District of Stewart will continue to manage the Landfill closure, including post closure environmental monitoring.

Throughout most of October, Regional District staff will be onsite at the Transfer Station during the new operational hours to welcome you and answer any questions you may have.



Regional District of
Kitimat-Stikine

Stewart Transfer Station & Recycling Center



Regional District of
Kitimat-Stikine

Suite 300 - 4545 Lazelle Ave.
Terrace, B.C. V8G 4E1
(250) 615-6100 (800) 663-3208
solidwasteservices@rdks.bc.ca

PROJECT UPDATE



Effective October 1st, 2019
the Stewart Transfer Station will
have **NEW** hours

HOURS OF OPERATION:

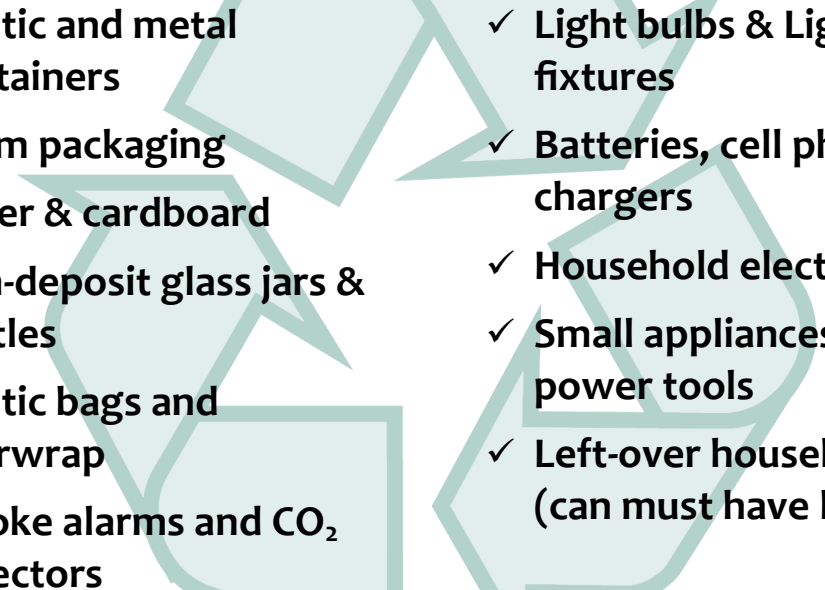
Tuesdays & Thursdays:
12:00 to 6:00 p.m.

Saturdays:
12:00 to 4:00 p.m.

There are **no tipping fees** in effect for garbage from homes and businesses.

The Recycling Center will continue to be **free** of charge. Large loads of construction demolition and land clearing debris require a permit. Call us for details and assistance.

RECYCLING kiosks are now located near the Facility entrance. Please use the Recycling Center to recycle the following materials:

- 
- ✓ Plastic and metal containers
 - ✓ Foam packaging
 - ✓ Paper & cardboard
 - ✓ Non-deposit glass jars & bottles
 - ✓ Plastic bags and overwrap
 - ✓ Smoke alarms and CO₂ detectors
 - ✓ Light bulbs & Light fixtures
 - ✓ Batteries, cell phones & chargers
 - ✓ Household electronics
 - ✓ Small appliances and power tools
 - ✓ Left-over household paint (can must have label)

GARBAGE will be disposed of at the new Z-wall. There are now 2 bins for general garbage and one bin for bulky construction/ demolition type waste. Need help? An attendant will be on site to direct you to the proper areas and answer questions.

OTHER MATERIALS? U-Bays for recycling scrap metal, large appliances, tires (off-rim only), and propane tanks have been included. Fridges and freezers will have their own U-Bay. Please drop them off and place them upright and in a tidy manner to ensure environmentally hazardous Freon can be removed properly.